

2012

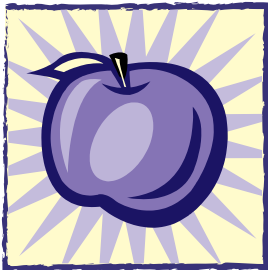
# MAY AND JUNE

Mite Marathon... **Stay Strong**  
**FINISH STRONG**

## 2011-2013 LWML BIENNIUM MITE CHALLENGE **REMEMBERING – REJOICING!**

We celebrate teachers, parents and national heroes. We enjoy vacations and family. And we remember the joy of Easter morning as we pray for, and support, our 19 LWML Mission Grants and our mission goal of \$1.825 million, for the 2011-2013 biennium. Christ is alive– rejoice – and give to spread the Good News!

*I consider my life worth nothing to me, if only I may finish the race and complete the task the Lord Jesus has given me ... (Acts 20:24).*



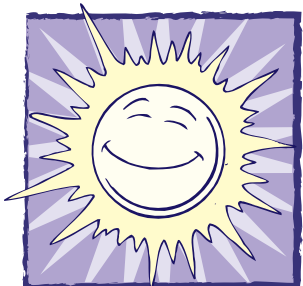
### May

- **The first week of May is Nurses Week** – Fold some \$ bills, put them in your Mite Box, and pray for nurses around the world. When you have your next appointment, tell your nurse you gave mites in her/his honor. Then tell them what mites are and how they're used.
- **May 8th is National Teachers Day** – Celebrate your favorite teachers! As you put \$ in your Mite Box today, remember the greatest Teacher of all – Jesus Christ!
- **May 13th is Mother's Day** – Honor your mother today with a gift in your Mite Box. Pray that mothers throughout the world will share the love of Christ with their children.
- **May 19th is Armed Forces Day** – Pay tribute today to those who serve in the United States Armed Forces. Pray for their safety. Thank God for their service as you add to your Mite Box.



### June

- **This month we celebrate candy – really!** – And if you think that's sweet, consider the delight of paying off another mission grant. Mmmm . . . how good it is!
- **June 5th is World Environment Day** – Turn in your recycling and put any money you earn in your Mite Box.
- **June 17th is Father's Day** – As we celebrate our earthly fathers, we remember the love of our Father in Heaven, who gave His only Son to die for our sins. Our mites share that message – give generously.
- **June 20th is the First Day of Summer** – Put \$ in your Mite Box for each pair of flip flops in your closet. *Your Word is a lamp to my feet and a light to my path* (Psalm 119:105).



Lutheran Women's  
Missionary League

www.lwml.org

Check for updates at [www.lwml.org/missions/mission-grants.php](http://www.lwml.org/missions/mission-grants.php)